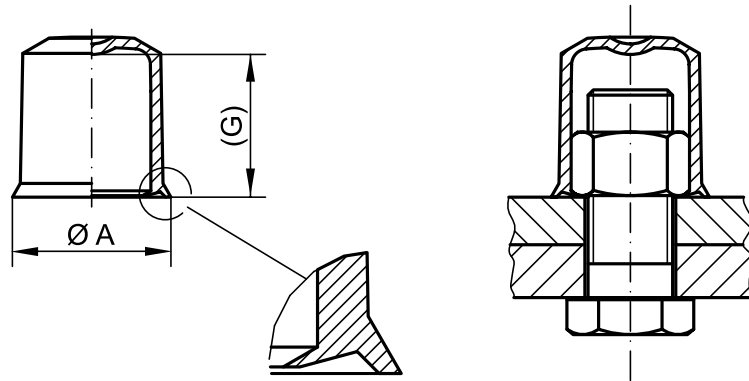


SNAP-ON CAPS

GPN 1010

Free test samples:

+49 4442 982-9100

poeppelmann.com/en/gpn1010


Standard colour: Black

Material: PE-LD



Better.

Protection for nuts and bolts.
Optimum corrosion protection.
Designed for greater bolt length.
The circumferential rim snaps in place beneath the nut.

Dimensions

Suitable for hexagon nuts

item	Dimensions		Wrench width	Metric threads			Pipe thread	Order no.
	A	(G)						
GPN 1010 SW 8	12	10.2	8	M 5			101 0008 0000	
GPN 1010 SW 10	15	13.5	10	M 6			101 0010 0000	
GPN 1010 SW 13	19	18.5	13	M 8	M 8 × 1		101 0013 0000	
GPN 1010 SW 17	24.4	25	17	M 10	M 10 × 1		101 0017 0000	
GPN 1010 SW 19	27	27.7	19	M 12	M 12 × 1.5		101 0019 0000	
GPN 1010 SW 22	30.5	33	22	M 14	M 14 × 1.5	1/4	101 0022 0000	
GPN 1010 SW 24	33.5	36.6	24	M 16	M 16 × 1.5		101 0024 0000	
GPN 1010 SW 30	41	47	30	M 20	M 20 × 1.5	M 20 × 2	101 0030 0000	
GPN 1010 SW 36	49.3	56.5	36	M 24	M 24 × 1.5	M 24 × 2	101 0036 0000	

Size in mm

For information regarding materials, colours, drawings and the use of our items, please refer to pages 124/125.

You might also be interested in the following products: GPN 1000, GPN 1050