

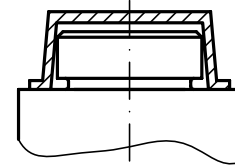
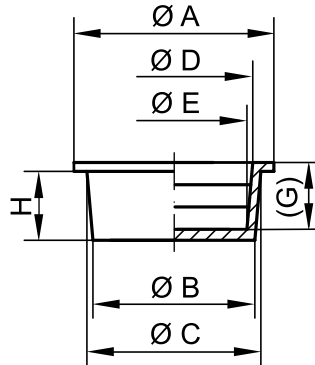
TAPERED CLOSURES

GPN 600

Free test samples:

+49 4442 982-9100

poeppelmann.com/en/gpn600



External application

**Standard colour:** Natural**Material:** PE-LD; PE-LLD (from GPN 600 B 915)**More versatile.**

Can be used universally as plug or cap. The tapered design is ideal for accommodating tolerances.

**Better.**

To close off bore holes and internal threads, or to protect studs and external threads.

External application

item	A	B	C	H	External application			Order no.
					D	E	(G)	
GPN 600 B 81	11	8.1	9.2	7.2	7.8	6.6	7	600 0081 0000
GPN 600 B 98	12	9.8	11	7.2	9.6	8.4	7	600 0098 0000
GPN 600 B 106	14	10.6	11.6	7	10	8.8	6.9	600 0106 0000
GPN 600 B 114	15	11.4	12.4	7	11.2	10	6.8	600 0114 0000
GPN 600 B 133	16	13.3	14.4	7	12.8	11.6	6.8	600 0133 0000
GPN 600 B 140	17	14	15.1	7.2	13.6	12.4	6.9	600 0140 0000
GPN 600 B 146	18	14.6	15.6	7.2	14.5	13.3	6.9	600 0146 0000
GPN 600 B 153	18	15.3	16.4	7	14.8	13.6	7	600 0153 0000
GPN 600 B 160	20	16	17.3	9	16.2	14.6	8.8	600 0160 0000
GPN 600 B 174	21	17.4	18.8	9.2	18	16.4	8.8	600 0174 0000
GPN 600 B 182	22	18.2	19.6	9	18.8	17.2	8.8	600 0182 0000
GPN 600 B 187	24	18.7	20	9.2	19	17.7	8.7	600 0187 0000
GPN 600 B 198	24	19.8	21.2	8.8	19.7	18.3	8.8	600 0198 0000
GPN 600 B 203	25	20.3	22.6	14	20.8	18.4	13.8	600 0203 0000
GPN 600 B 212	26	21.2	23.3	14.2	22	19.6	14	600 0212 0000
GPN 600 B 230	28	23	25	14	24	21.6	13.8	600 0230 0000
GPN 600 B 243	30	24.3	26.4	14	25	22.6	13.6	600 0243 0000
GPN 600 B 257	30	25.7	27.8	14.2	26.8	24.4	13.8	600 0257 0000
GPN 600 B 272	32	27.2	29.3	14	27	24.6	13.8	600 0272 0000
GPN 600 B 300	35	30	32	14	30.6	28.4	13.8	600 0300 0000
GPN 600 B 320	38	32	34	14	32	29.6	14	600 0320 0000
GPN 600 B 336	40	33.6	36	14	34	31.6	14	600 0336 0000
GPN 600 B 345	41	34.5	37	14	35	32.6	14	600 0345 0000
GPN 600 B 355	42	35.5	38.1	14	35.5	33.1	14	600 0355 0000
GPN 600 B 360	42	36.2	38.4	14	36	33.6	14	600 0360 0000
GPN 600 B 379	44	37.9	40	13.8	38	35.6	13.8	600 0379 0000
GPN 600 B 385	43	38.5	41	14	39.5	37.1	14	600 0385 0000
GPN 600 B 398	46	39.8	42	14	39.5	37.1	14	600 0398 0000
GPN 600 B 413	47	41.3	43.5	14	41.5	39.1	14	600 0413 0000
GPN 600 B 439	51.5	43.9	46	13.5	42	40.2	13.6	600 0439 0000
GPN 600 B 455	52	45.5	47.5	13.5	45	43	13.6	600 0455 0000
GPN 600 B 479	54	47.9	50	13.5	46.5	44.1	13.6	600 0479 0000
GPN 600 B 498	56	49.8	51.6	13.3	48.5	46.1	13.5	600 0498 0000
GPN 600 B 505	55	50.5	53.3	14	51.3	48.8	14.2	600 0505 0000
GPN 600 B 525	58	52.5	54.9	13.5	52.5	50.6	13.5	600 0525 0000
GPN 600 B 545	60	54.5	56.2	13.5	54	51.6	13.5	600 0545 0000
GPN 600 B 555	61	55.5	58	13.6	55	52.6	13.5	600 0555 0000
GPN 600 B 570	63	57	59	13.4	56.8	54.5	13.5	600 0570 0000
GPN 600 B 585	64	58.5	60.8	13.5	58	55.6	13.5	600 0585 0000
GPN 600 B 605	66	60.5	63	13.5	60	57.6	14	600 0605 0000
GPN 600 B 613	67	61.3	63.5	13	61	58.6	13.5	600 0613 0000
GPN 600 B 625	68	62.5	64.8	13.2	62	59.6	13.5	600 0625 0000
GPN 600 B 635	69	63.5	65.7	13	63	60.1	13.5	600 0635 0000
GPN 600 B 650	71	65	67.3	13	64.5	62.3	13.3	600 0650 0000
GPN 600 B 660	72	66	67.5	13	65	62.6	13	600 0660 0000
GPN 600 B 679	74	67.9	69.5	13	67	64.6	13.5	600 0679 0000
GPN 600 B 698	75	69.8	71.7	13	68	66	13.5	600 0698 0000
GPN 600 B 715	77	71.5	73.4	13	70	67.6	13	600 0715 0000
GPN 600 B 728	79	72.8	74	13	70	67.6	13.5	600 0728 0000
GPN 600 B 740	85	74	76.6	17	73	69.9	17	600 0740 0000
GPN 600 B 765	87	76.5	79	16.8	76.5	73.4	17.2	600 0765 0000
GPN 600 B 775	88	77.5	80	17	76	72.9	17.2	600 0775 0000

Size in mm

» Continued on page 19

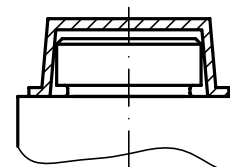
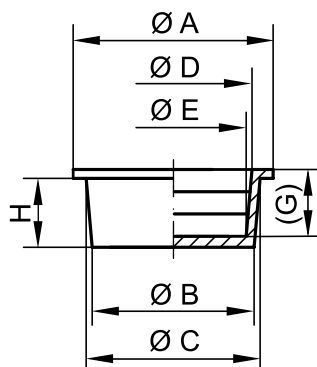
TAPERED CLOSURES

GPN 600

Free test samples:

+49 4442 982-9100

poeppele.com/en/gpn600



External application

« Continued from page 28



Standard colour: Natural

Material: PE-LD; PE-LLD (from GPN 600 B 915)



More versatile.

Can be used universally as plug or cap. The tapered design is ideal for accommodating tolerances.



Better.

To close off bore holes and internal threads, or to protect studs and external threads.

For information regarding materials, colours, drawings and the use of our items, please refer to pages 124/125.

You might also be interested in the following products: GPN 250, GPN 601, GPN 602, GPN 608

External application

item	A	B	C	H	D	E	(G)	Order no.
GPN 600 B 790	90	79	82	17	78	75.4	17.2	600 0790 0000
GPN 600 B 815	92	81.5	83.6	16.5	80	76.9	17	600 0815 0000
GPN 600 B 820	89	82	86	23	83.9	79.7	23.5	600 0820 0000
GPN 600 B 840	95	84	87.1	16.5	83	79.9	17	600 0840 0000
GPN 600 B 865	97	86.5	89	17.5	86	82.9	18	600 0865 0000
GPN 600 B 890	100	89	91.5	17	89	86.5	17.5	600 0890 0000
GPN 600 B 915	102	91.5	94	17	92	88.9	17.5	600 0915 0000
GPN 600 B 940	105	94	96	17	92	90	17.5	600 0940 0000
GPN 600 B 965	107	96.5	99	17	96	92.9	17.5	600 0965 0000
GPN 600 B 990	110	99	102.5	17	99	95.9	17.5	600 0990 0000
GPN 600 B 1015	112	101.5	104	17	102	98.9	17.3	600 1015 0000
GPN 600 B 1040	115	104	106.5	17	104	100.9	17.5	600 1040 0000
GPN 600 B 1065	117	106.5	109	17	106	102.9	17.2	600 1065 0000
GPN 600 B 1090	120	109	111	17	108	105	17.5	600 1090 0000
GPN 600 B 1120	123	112	114.5	17	112.5	109.4	17	600 1120 0000
GPN 600 B 1140	125	114	117	16.6	114.5	111.4	17.2	600 1140 0000
GPN 600 B 1143	124.5	114.3	119.2	28	117.1	112.1	28.7	600 1143 0000
GPN 600 B 1190	130	119	123	23	120.2	116.1	23	600 1190 0000
GPN 600 B 1240	134	124	128	23	123	119.1	23	600 1240 0000
GPN 600 B 1275	137.6	127.5	130.6	23	127.6	123.6	22.5	600 1275 0000
GPN 600 B 1290	140	129	133	23	130.2	126.1	23.5	600 1290 0000
GPN 600 B 1330	143	134.5	137	23	133	129	22.5	600 1330 0000
GPN 600 B 1390	149	139	143	23	139	135	23	600 1390 0000
GPN 600 B 1468	159.5	146.8	152.6	33	149.9	144	33.5	600 1468 0000
GPN 600 B 1490	159	149	153	23	148	144.1	23.3	600 1490 0000
GPN 600 B 1535	163.6	153.5	157.5	23	153.6	149.6	23	600 1535 0000
GPN 600 B 1590	169	159	162	23	158	154	23	600 1590 0000
GPN 600 B 1600	170	160	164	23	160	156	23	600 1600 0000
GPN 600 B 1690	179	169	172	23	168	164	23	600 1690 0000
GPN 600 B 1740	184	174	177	23	173	169	22.5	600 1740 0000
GPN 600 B 1790	189	179	182	23	178	174	23	600 1790 0000
GPN 600 B 1815	192	181.5	184.5	23	180.5	176.5	23	600 1815 0000
GPN 600 B 1836	199.5	183.6	190.6	33	187.9	182	33.8	600 1836 0000
GPN 600 B 1990	209	199	202	22.5	198	194	22.5	600 1990 0000
GPN 600 B 2020	212	202	205	23	202.1	198.1	23	600 2020 0000
GPN 600 B 2030	213	203	205	23	202	199	23	600 2030 0000
GPN 600 B 2060	216	206	210.6	23.5	206	201.6	23.5	600 2060 0000
GPN 600 B 2180	235	218	222	22.5	217.4	213.5	22.5	600 2180 0000
GPN 600 B 2250*	242	225	229	23.5	225.4	221.3	23	600 2250 0000
GPN 600 B 2312	249.5	231.2	238.2	33	235.6	228.6	33.5	600 2312 0000
GPN 600 B 2490	267	249	252	22.5	248	244.1	22.5	600 2490 0000
GPN 600 B 2530	265	253	258	18	253	249.2	18	600 2530 0000
GPN 600 B 2934	314	293.4	300.2	32.5	296.7	289.8	33	600 2934 0000
GPN 600 B 2990	315	299	304	22.5	298	294.1	22.5	600 2990 0000
GPN 600 B 3080	326	308	313	21.8	308	303.4	21.8	600 3080 0000
GPN 600 B 3110	329	311	316	22	311	306.4	21.7	600 3110 0000
GPN 600 B 3380	358	338	343	22	338	333.4	21.8	600 3380 0000
GPN 600 B 3719*	399	371.9	381	32.5	377.7	368.4	32.8	600 3719 0000
GPN 600 B 3980	415	398	406	30	399	392.7	29.8	600 3980 0000
GPN 600 B 4350	455	435	443	30	437	430.7	30	600 4350 0000
GPN 600 B 4654	499	465.4	476.7	32	472.8	461.3	33	600 4654 0000
GPN 600 B 4840	506	484	491	30	486	479.7	30	600 4840 0000

Size in mm

» Guide values for outdoor use can be found on page 30

*These sizes are supplied with bore.

GPN 600

Free test samples:

+49 4442 982-9100

poeppelmann.com/en/gpn600


Application Guide Data for Exterior Use

Metric threads

Standard thread	Finde thread					Pipe thread	item	
M 7							GPN 600 B 81	
M 9	M 9 × 1						GPN 600 B 98	
	M 10.5 × 1						GPN 600 B 114	
M 12	M 12 × 1	M 12 × 1.5					GPN 600 B 133	
	M 13 × 1	M 13 × 1.5					GPN 600 B 140	
M 14	M 14 × 1	M 14 × 1.5					GPN 600 B 146	
	M 15 × 1	M 15 × 1.5					GPN 600 B 160	
	M 17 × 1						GPN 600 B 174	
M 18	M 18 × 1	M 18 × 1.5	M 18 × 2				GPN 600 B 182	
	M 19 × 1	M 19 × 1.5	M 19 × 2				GPN 600 B 203	
						1/2	GPN 600 B 212	
M 22	M 22 × 1	M 22 × 1.5	M 22 × 2				GPN 600 B 230	
M 24	M 24 × 1	M 24 × 1.5	M 24 × 2				GPN 600 B 243	
	M 25 × 1	M 25 × 1.5	M 25 × 2				GPN 600 B 257	
	M 26 × 1	M 26 × 1.5	M 26 × 2				GPN 600 B 272	
M 30	M 30 × 1	M 30 × 1.5	M 30 × 2	M 30 × 3		7/8	GPN 600 B 320	
	M 32 × 1	M 32 × 1.5	M 32 × 2	M 32 × 3			GPN 600 B 336	
M 33	M 33 × 1	M 33 × 1.5	M 33 × 2	M 33 × 3		1	GPN 600 B 345	
	M 34 × 1	M 34 × 1.5	M 34 × 2	M 34 × 3			GPN 600 B 355	
		M 35 × 1.5					GPN 600 B 360	
	M 38 × 1	M 38 × 1.5	M 38 × 2	M 38 × 3		1 1/8	GPN 600 B 385	
	M 38 × 1	M 38 × 1.5	M 38 × 2	M 38 × 3		1 1/8	GPN 600 B 398	
	M 40 × 1	M 40 × 1.5	M 40 × 2	M 40 × 3			GPN 600 B 413	
M 45	M 45 × 1	M 45 × 1.5	M 45 × 2	M 45 × 3	M 45 × 4		GPN 600 B 479	
						1 1/2	GPN 600 B 498	
	M 50 × 1	M 50 × 1.5	M 50 × 2	M 50 × 3	M 50 × 4		GPN 600 B 505	
	M 50 × 1	M 50 × 1.5	M 50 × 2	M 50 × 3	M 50 × 4		GPN 600 B 525	
						1 3/4	GPN 600 B 555	
M 60	M 60 × 1	M 60 × 1.5	M 60 × 2	M 60 × 3	M 60 × 4	2	GPN 600 B 613	
M 64	M 64 × 1	M 64 × 1.5	M 64 × 2	M 64 × 3	M 64 × 4		GPN 600 B 660	
						2 1/4	GPN 600 B 679	
	M 75 × 1	M 75 × 1.5	M 75 × 2	M 75 × 3	M 75 × 4	2 1/2	GPN 600 B 765	
	M 78 × 1	M 78 × 1.5	M 78 × 2	M 78 × 3	M 78 × 4		GPN 600 B 815	
						2 3/4	GPN 600 B 840	
		M 90 × 1.5	M 90 × 2	M 90 × 3	M 90 × 4	M 90 × 6	GPN 600 B 915	
		M 100 × 1.5	M 100 × 2	M 100 × 3	M 100 × 4	M 100 × 6	3 1/2	GPN 600 B 1015
		M 102 × 1.5	M 102 × 2	M 102 × 3	M 102 × 4		GPN 600 B 1040	
		M 110 × 1.5	M 110 × 2	M 110 × 3	M 110 × 4	M 110 × 6	GPN 600 B 1120	
		M 112 × 1.5	M 112 × 2	M 112 × 3	M 112 × 4		GPN 600 B 1140	
		M 115 × 1.5	M 115 × 2	M 115 × 3	M 115 × 4	M 115 × 6	4	GPN 600 B 1143
		M 118 × 1.5	M 118 × 2	M 118 × 3	M 118 × 4		GPN 600 B 1190	
		M 120 × 1.5	M 120 × 2	M 120 × 3	M 120 × 4	M 120 × 6	GPN 600 B 1240	
		M 125 × 1.5	M 125 × 2	M 125 × 3	M 125 × 4	M 125 × 6	4 1/2	GPN 600 B 1275
		M 128 × 1.5	M 128 × 2	M 128 × 3	M 128 × 4		GPN 600 B 1290	
		M 130 × 1.5	M 130 × 2	M 130 × 3	M 130 × 4	M 130 × 6	GPN 600 B 1330	
		M 145 × 1.5	M 145 × 2	M 145 × 3	M 145 × 4	M 145 × 6	GPN 600 B 1468	
		M 145 × 1.5	M 145 × 2	M 145 × 3	M 145 × 4	M 145 × 6	GPN 600 B 1490	
		M 150 × 1.5	M 150 × 2	M 150 × 3	M 150 × 4	M 150 × 6	5 1/2	GPN 600 B 1535
		M 155 × 1.5	M 155 × 2	M 155 × 3	M 155 × 4	M 155 × 6	GPN 600 B 1590	
		M 165 × 1.5	M 165 × 2	M 165 × 3	M 165 × 4	M 165 × 6	GPN 600 B 1690	
		M 170 × 1.5	M 170 × 2	M 170 × 3	M 170 × 4	M 170 × 6	GPN 600 B 1740	
		M 175 × 1.5	M 175 × 2	M 175 × 3	M 175 × 4	M 175 × 6	GPN 600 B 1790	
		M 178 × 1.5	M 178 × 2	M 178 × 3			GPN 600 B 1815	
		M 182 × 1.5	M 182 × 2	M 182 × 3	M 182 × 4		GPN 600 B 1836	
		M 195 × 1.5	M 195 × 2	M 195 × 3	M 195 × 4	M 195 × 6	GPN 600 B 1990	
		M 200 × 1.5	M 200 × 2	M 200 × 3	M 200 × 4	M 200 × 6	GPN 600 B 2020	
		M 200 × 1.5	M 200 × 2	M 200 × 3	M 200 × 4	M 200 × 6	GPN 600 B 2030	
		M 215 × 1.5	M 215 × 2	M 215 × 3	M 215 × 4	M 215 × 6	GPN 600 B 2180	
		M 230 × 1.5	M 230 × 2	M 230 × 3	M 230 × 4	M 230 × 6	GPN 600 B 2312	
		M 245 × 1.5	M 245 × 2	M 245 × 3	M 245 × 4	M 245 × 6	GPN 600 B 2490	
		M 250 × 1.5	M 250 × 2			M 250 × 6	GPN 600 B 2530	
		M 292 × 1.5	M 292 × 2			M 292 × 4	GPN 600 B 2934	
		M 295 × 1.5	M 295 × 2	M 295 × 4	M 295 × 6		GPN 600 B 2990	

« Dimensions on pages 28/29

This application table is a guide only. We would be happy to send you free samples for testing. For bolts, pins and pipe ends, please select according to functional dimensions D and E.

For information regarding materials, colours, drawings and the use of our items, please refer to pages 124/125.

You might also be interested in the following products: [GPN 610](#), [GPN 615](#), [GPN 620](#)


PÖPPELMANN
KAPSTO®

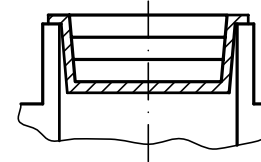
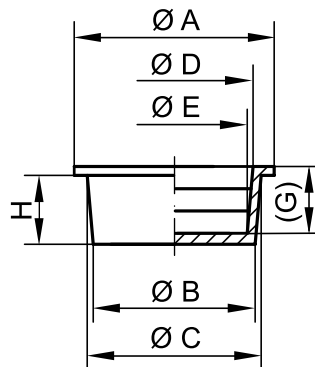
TAPERED CLOSURES

GPN 600

Free test samples:

+49 4442 982-9100

poeppelmann.com/en/gpn600



Inner application



Inner application

item	Inner application							Order no.
	A	B	C	H	D	E	(G)	
GPN 600 B 81	11	8.1	9.2	7.2	7.8	6.6	7	600 0081 0000
GPN 600 B 98	12	9.8	11	7.2	9.6	8.4	7	600 0098 0000
GPN 600 B 106	14	10.6	11.6	7	10	8.8	6.9	600 0106 0000
GPN 600 B 114	15	11.4	12.4	7	11.2	10	6.8	600 0114 0000
GPN 600 B 133	16	13.3	14.4	7	12.8	11.6	6.8	600 0133 0000
GPN 600 B 140	17	14	15.1	7.2	13.6	12.4	6.9	600 0140 0000
GPN 600 B 146	18	14.6	15.6	7.2	14.5	13.3	6.9	600 0146 0000
GPN 600 B 153	18	15.3	16.4	7	14.8	13.6	7	600 0153 0000
GPN 600 B 160	20	16	17.3	9	16.2	14.6	8.8	600 0160 0000
GPN 600 B 174	21	17.4	18.8	9.2	18	16.4	8.8	600 0174 0000
GPN 600 B 182	22	18.2	19.6	9	18.8	17.2	8.8	600 0182 0000
GPN 600 B 187	24	18.7	20	9.2	19	17.7	8.7	600 0187 0000
GPN 600 B 198	24	19.8	21.2	8.8	19.7	18.3	8.8	600 0198 0000
GPN 600 B 203	25	20.3	22.6	14	20.8	18.4	13.8	600 0203 0000
GPN 600 B 212	26	21.2	23.3	14.2	22	19.6	14	600 0212 0000
GPN 600 B 230	28	23	25	14	24	21.6	13.8	600 0230 0000
GPN 600 B 243	30	24.3	26.4	14	25	22.6	13.6	600 0243 0000
GPN 600 B 257	30	25.7	27.8	14.2	26.8	24.4	13.8	600 0257 0000
GPN 600 B 272	32	27.2	29.3	14	27	24.6	13.8	600 0272 0000
GPN 600 B 300	35	30	32	14	30.6	28.4	13.8	600 0300 0000
GPN 600 B 320	38	32	34	14	32	29.6	14	600 0320 0000
GPN 600 B 336	40	33.6	36	14	34	31.6	14	600 0336 0000
GPN 600 B 345	41	34.5	37	14	35	32.6	14	600 0345 0000
GPN 600 B 355	42	35.5	38.1	14	35.5	33.1	14	600 0355 0000
GPN 600 B 360	42	36.2	38.4	14	36	33.6	14	600 0360 0000
GPN 600 B 379	44	37.9	40	13.8	38	35.6	13.8	600 0379 0000
GPN 600 B 385	43	38.5	41	14	39.5	37.1	14	600 0385 0000
GPN 600 B 398	46	39.8	42	14	39.5	37.1	14	600 0398 0000
GPN 600 B 413	47	41.3	43.5	14	41.5	39.1	14	600 0413 0000
GPN 600 B 439	51.5	43.9	46	13.5	42	40.2	13.6	600 0439 0000
GPN 600 B 455	52	45.5	47.5	13.5	45	43	13.6	600 0455 0000
GPN 600 B 479	54	47.9	50	13.5	46.5	44.1	13.6	600 0479 0000
GPN 600 B 498	56	49.8	51.6	13.3	48.5	46.1	13.5	600 0498 0000
GPN 600 B 505	55	50.5	53.3	14	51.3	48.8	14.2	600 0505 0000
GPN 600 B 525	58	52.5	54.9	13.5	52.5	50.6	13.5	600 0525 0000
GPN 600 B 545	60	54.5	56.2	13.5	54	51.6	13.5	600 0545 0000
GPN 600 B 555	61	55.5	58	13.6	55	52.6	13.5	600 0555 0000
GPN 600 B 570	63	57	59	13.4	56.8	54.5	13.5	600 0570 0000
GPN 600 B 585	64	58.5	60.8	13.5	58	55.6	13.5	600 0585 0000
GPN 600 B 605	66	60.5	63	13.5	60	57.6	14	600 0605 0000
GPN 600 B 613	67	61.3	63.5	13	61	58.6	13.5	600 0613 0000
GPN 600 B 625	68	62.5	64.8	13.2	62	59.6	13.5	600 0625 0000
GPN 600 B 635	69	63.5	65.7	13	63	60.1	13.5	600 0635 0000
GPN 600 B 650	71	65	67.3	13	64.5	62.3	13.3	600 0650 0000
GPN 600 B 660	72	66	67.5	13	65	62.6	13	600 0660 0000
GPN 600 B 679	74	67.9	69.5	13	67	64.6	13.5	600 0679 0000
GPN 600 B 698	75	69.8	71.7	13	68	66	13.5	600 0698 0000
GPN 600 B 715	77	71.5	73.4	13	70	67.6	13	600 0715 0000
GPN 600 B 728	79	72.8	74	13	70	67.6	13.5	600 0728 0000
GPN 600 B 740	85	74	76.6	17	73	69.9	17	600 0740 0000
GPN 600 B 765	87	76.5	79	16.8	76.5	73.4	17.2	600 0765 0000
GPN 600 B 775	88	77.5	80	17	76	72.9	17.2	600 0775 0000

Size in mm

» Continued on page 77

Standard colour: Natural**Material:** PE-LD; PE-LLD (from GPN 600 B 915)**More versatile.**

Can be used universally as plug or cap. The tapered design is ideal for accommodating tolerances.

**Better.**

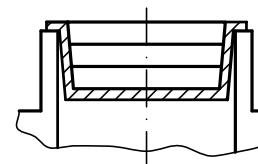
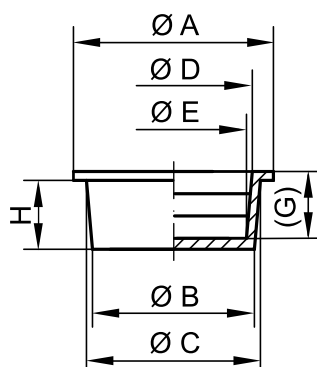
To close off bore holes and internal threads, or to protect studs and external threads.

TAPERED CLOSURES

GPN 600

Free test samples:

+49 4442 982-9100

poeppelmann.com/en/gpn600


Inner application

« Continued from page 76



Standard colour: Natural

Material: PE-LD; PE-LLD (from GPN 600 B 915)



More versatile.

Can be used universally as plug or cap. The tapered design is ideal for accommodating tolerances.



Better.

To close off bore holes and internal threads, or to protect studs and external threads.

For information regarding materials, colours, drawings and the use of our items, please refer to pages 124/125.

Inner application

item	A	B	C	H	D	E	(G)	Order no.
GPN 600 B 790	90	79	82	17	78	75.4	17.2	600 0790 0000
GPN 600 B 815	92	81.5	83.6	16.5	80	76.9	17	600 0815 0000
GPN 600 B 820	89	82	86	23	83.9	79.7	23.5	600 0820 0000
GPN 600 B 840	95	84	87.1	16.5	83	79.9	17	600 0840 0000
GPN 600 B 865	97	86.5	89	17.5	86	82.9	18	600 0865 0000
GPN 600 B 890	100	89	91.5	17	89	86.5	17.5	600 0890 0000
GPN 600 B 915	102	91.5	94	17	92	88.9	17.5	600 0915 0000
GPN 600 B 940	105	94	96	17	92	90	17.5	600 0940 0000
GPN 600 B 965	107	96.5	99	17	96	92.9	17.5	600 0965 0000
GPN 600 B 990	110	99	102.5	17	99	95.9	17.5	600 0990 0000
GPN 600 B 1015	112	101.5	104	17	102	98.9	17.3	600 1015 0000
GPN 600 B 1040	115	104	106.5	17	104	100.9	17.5	600 1040 0000
GPN 600 B 1065	117	106.5	109	17	106	102.9	17.2	600 1065 0000
GPN 600 B 1090	120	109	111	17	108	105	17.5	600 1090 0000
GPN 600 B 1120	123	112	114.5	17	112.5	109.4	17	600 1120 0000
GPN 600 B 1140	125	114	117	16.6	114.5	111.4	17.2	600 1140 0000
GPN 600 B 1143	124.5	114.3	119.2	28	117.1	112.1	28.7	600 1143 0000
GPN 600 B 1190	130	119	123	23	120.2	116.1	23	600 1190 0000
GPN 600 B 1240	134	124	128	23	123	119.1	23	600 1240 0000
GPN 600 B 1275	137.6	127.5	130.6	23	127.6	123.6	22.5	600 1275 0000
GPN 600 B 1290	140	129	133	23	130.2	126.1	23.5	600 1290 0000
GPN 600 B 1330	143	134.5	137	23	133	129	22.5	600 1330 0000
GPN 600 B 1390	149	139	143	23	139	135	23	600 1390 0000
GPN 600 B 1468	159.5	146.8	152.6	33	149.9	144	33.5	600 1468 0000
GPN 600 B 1490	159	149	153	23	148	144.1	23.3	600 1490 0000
GPN 600 B 1535	163.6	153.5	157.5	23	153.6	149.6	23	600 1535 0000
GPN 600 B 1590	169	159	162	23	158	154	23	600 1590 0000
GPN 600 B 1600	170	160	164	23	160	156	23	600 1600 0000
GPN 600 B 1690	179	169	172	23	168	164	23	600 1690 0000
GPN 600 B 1740	184	174	177	23	173	169	22.5	600 1740 0000
GPN 600 B 1790	189	179	182	23	178	174	23	600 1790 0000
GPN 600 B 1815	192	181.5	184.5	23	180.5	176.5	23	600 1815 0000
GPN 600 B 1836	199.5	183.6	190.6	33	187.9	182	33.8	600 1836 0000
GPN 600 B 1990	209	199	202	22.5	198	194	22.5	600 1990 0000
GPN 600 B 2020	212	202	205	23	202.1	198.1	23	600 2020 0000
GPN 600 B 2030	213	203	205	23	202	199	23	600 2030 0000
GPN 600 B 2060	216	206	210.6	23.5	206	201.6	23.5	600 2060 0000
GPN 600 B 2180	235	218	222	22.5	217.4	213.5	22.5	600 2180 0000
GPN 600 B 2250*	242	225	229	23.5	225.4	221.3	23	600 2250 0000
GPN 600 B 2312	249.5	231.2	238.2	33	235.6	228.6	33.5	600 2312 0000
GPN 600 B 2490	267	249	252	22.5	248	244.1	22.5	600 2490 0000
GPN 600 B 2530	265	253	258	18	253	249.2	18	600 2530 0000
GPN 600 B 2934	314	293.4	300.2	32.5	296.7	289.8	33	600 2934 0000
GPN 600 B 2990	315	299	304	22.5	298	294.1	22.5	600 2990 0000
GPN 600 B 3080	326	308	313	21.8	308	303.4	21.8	600 3080 0000
GPN 600 B 3110	329	311	316	22	311	306.4	21.7	600 3110 0000
GPN 600 B 3380	358	338	343	22	338	333.4	21.8	600 3380 0000
GPN 600 B 3719*	399	371.9	381	32.5	377.7	368.4	32.8	600 3719 0000
GPN 600 B 3980	415	398	406	30	399	392.7	29.8	600 3980 0000
GPN 600 B 4350	455	435	443	30	437	430.7	30	600 4350 0000
GPN 600 B 4654	499	465.4	476.7	32	472.8	461.3	33	600 4654 0000
GPN 600 B 4840	506	484	491	30	486	479.7	30	600 4840 0000

Size in mm

» Guide values for internal use can be found on page 78

*These sizes are supplied with bore.


PÖPPELMANN
KAPSTO®

GPN 600

Free test samples:

+49 4442 982-9100

poeppelmann.com/en/gpn600


Application Guide Data for Internal Use

Metric threads

Standard thread	Finde thread				Pipe thread	item
M 10	M 10 × 1				1/8	GPN 600 B 81
M 12		M 12 × 1.5				GPN 600 B 98
	M 12 × 1					GPN 600 B 106
M 14					1/4	GPN 600 B 114
M 16	M 15 × 1					GPN 600 B 133
						GPN 600 B 140
M 18					3/8	GPN 600 B 146
	M 17 × 1	M 18 × 2				GPN 600 B 153
						GPN 600 B 160
		M 20 × 1.5	M 20 × 2			GPN 600 B 174
	M 20 × 1				1/2	GPN 600 B 182
M 22						GPN 600 B 187
M 24		M 22 × 1.5			5/8	GPN 600 B 198
			M 24 × 2			GPN 600 B 203
		M 24 × 1.5				GPN 600 B 212
M 27		M 26 × 1.5	M 26 × 2		3/4	GPN 600 B 230
	M 27 × 1	M 27 × 1.5	M 28 × 2			GPN 600 B 243
M 30	M 28 × 1	M 28 × 1.5		M 30 × 3		GPN 600 B 257
		M 30 × 1.5	M 30 × 2	M 32 × 3	7/8	GPN 600 B 272
	M 32 × 1	M 33 × 1.5	M 33 × 2	M 34 × 3		GPN 600 B 300
	M 34 × 1	M 35 × 1.5	M 35 × 2	M 36 × 3		GPN 600 B 320
M 39	M 36 × 1	M 36 × 1.5	M 37 × 2	M 38 × 3	1 1/8	GPN 600 B 336
	M 37 × 1	M 37 × 1.5	M 38 × 2	M 39 × 3		GPN 600 B 345
M 42	M 38 × 1	M 38 × 1.5	M 39 × 2	M 40 × 3		GPN 600 B 355
M 42		M 39 × 1.5	M 39 × 2			GPN 600 B 360
	M 40 × 1	M 40 × 1.5	M 42 × 2	M 42 × 3	1 1/4	GPN 600 B 379
M 45		M 42 × 1.5				GPN 600 B 385
	M 42 × 1			M 45 × 3		GPN 600 B 398
M 48			M 45 × 2	M 45 × 4	1 3/8	GPN 600 B 413
				M 48 × 3	1 1/2	GPN 600 B 439
M 52	M 48 × 1	M 48 × 1.5		M 50 × 3		GPN 600 B 455
	M 50 × 1	M 50 × 1.5		M 52 × 3	1 3/4	GPN 600 B 479
	M 52 × 1					GPN 600 B 498
				M 55 × 3		GPN 600 B 505
M 60	M 55 × 1	M 55 × 1.5	M 56 × 2			GPN 600 B 525
				M 58 × 4		GPN 600 B 545
				M 60 × 4		GPN 600 B 555
	M 58 × 1	M 58 × 1.5		M 60 × 3	2	GPN 600 B 570
		M 60 × 1.5	M 60 × 2			GPN 600 B 570
			M 62 × 2	M 62 × 4		GPN 600 B 585
M 68			M 64 × 2	M 64 × 4		GPN 600 B 605
		M 64 × 1.5	M 65 × 2	M 65 × 3		GPN 600 B 613
	M 64 × 1				2 1/4	GPN 600 B 613
				M 64 × 4		GPN 600 B 625
				M 68 × 4		GPN 600 B 635
			M 68 × 3			GPN 600 B 650
			M 68 × 2			GPN 600 B 650
				M 72 × 3		GPN 600 B 679
			M 75 × 2		2 1/2	GPN 600 B 715
			M 76 × 2			GPN 600 B 728
				M 80 × 6		GPN 600 B 740
			M 80 × 2	M 80 × 4		GPN 600 B 765
					2 3/4	GPN 600 B 775
				M 85 × 6		GPN 600 B 790
			M 85 × 2	M 85 × 4		GPN 600 B 815
					3	GPN 600 B 820
				M 90 × 4		GPN 600 B 840
			M 90 × 2	M 90 × 6		GPN 600 B 865
				M 95 × 6	3 1/4	GPN 600 B 890
			M 95 × 4			GPN 600 B 915
			M 95 × 2	M 100 × 6		GPN 600 B 940
				M 100 × 4		GPN 600 B 965
			M 100 × 2	M 105 × 6	3 1/2	GPN 600 B 990
				M 105 × 4		GPN 600 B 1015
			M 105 × 2	M 110 × 6		GPN 600 B 1040
				M 110 × 4		

« Dimensions on pages 76/77

» Continued on page 79



TAPERED CLOSURES

GPN 600

Free test samples:

+49 4442 982-9100

poeppelmann.com/en/gpn600

« Continued from page 78

Metric threads

Standard thread	Finde thread	Pipe thread	item
	M 110 × 2	M 115 × 6	GPN 600 B 1065
		M 115 × 4	GPN 600 B 1090
	M 115 × 2	M 120 × 6	GPN 600 B 1120
		M 120 × 4	GPN 600 B 1140
	M 120 × 2	M 125 × 6	GPN 600 B 1143
		M 125 × 4	GPN 600 B 1190
		M 130 × 4	GPN 600 B 1240
		M 135 × 6	GPN 600 B 1275
		M 140 × 4	GPN 600 B 1330
		M 155 × 6	GPN 600 B 1468
	M 155 × 3		GPN 600 B 1490
	M 160 × 3		GPN 600 B 1535
			GPN 600 B 1590
	M 165 × 3	M 170 × 6	GPN 600 B 1600
		M 190 × 6	GPN 600 B 1815
	M 190 × 3	M 195 × 6	GPN 600 B 1836
		M 210 × 6	GPN 600 B 2020

This application table is a guide only. We will be happy to send you free samples for testing. For apertures and bore holes without thread, please use dimensions B and C.

For information regarding materials, colours, drawings and the use of our items, please refer to pages 124/125.

You might also be interested in the following products: [GPN 602](#), [GPN 608](#), [GPN 610](#)

