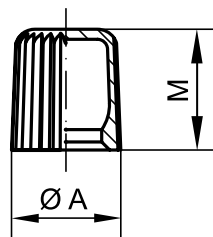


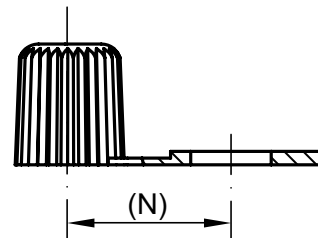
GREASE NIPPLE CAPS

# GPN 980

Free test samples:

+49 4442 982-9100  
poeppelmann.com/en/gpn980

Type A



Type B



## Type A (without tab)

### Dimensions

| item           | A   | M | Colour | Order no.     |
|----------------|-----|---|--------|---------------|
| GPN 980 / 0100 | 8.2 | 9 | Yellow | 980 0100 0000 |
| GPN 980 / 0101 | 8.2 | 9 | Red    | 980 0101 0000 |
| GPN 980 / 0102 | 8.2 | 9 | Green  | 980 0102 0000 |
| GPN 980 / 0103 | 8.2 | 9 | Black  | 980 0103 0000 |

## Type B (with tab)

### Dimensions

| item           | A   | M | (N) | Colour | Order no.     |
|----------------|-----|---|-----|--------|---------------|
| GPN 980 / 0200 | 8.2 | 9 | 12  | Yellow | 980 0200 0000 |
| GPN 980 / 0201 | 8.2 | 9 | 12  | Red    | 980 0201 0000 |
| GPN 980 / 0202 | 8.2 | 9 | 12  | Green  | 980 0202 0000 |
| GPN 980 / 0203 | 8.2 | 9 | 12  | Black  | 980 0203 0000 |

Size in mm

For information regarding materials, colours, drawings and the use of our items, please refer to pages 124/125.

You might also be interested in the following product: GPN 985



### Better fit.

Protection for grease nipples in accordance with DIN EN 71412.



### Better.

For marking the lubrication point and to protect the tapered head. Easy-to-grip knurled outer wall.

Type A: without tab

Type B: with tab



PÖPPELMANN

KAPSTO®