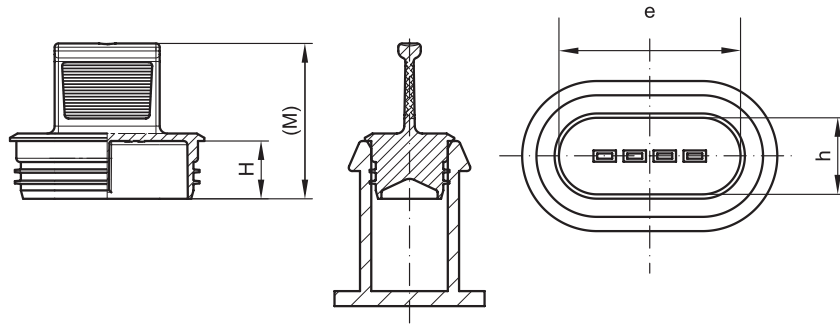


GPN 361

NEW
Free test sample:

 +49 4442 982-9100
 poeppelmann.com/en/gpn361

Standard colour: yellow

Material PE-LD, PE-LLD (GPN 361 KS 0511)

item	Suitable for internal contour		Dimensions		Order no.
	e	h	H	(M)	
GPN 361 KS 0211	16.2	10.2	7.7	20.7	361 0211 0000
GPN 361 KS 0311	20.3	10.3	7.7	20.7	361 0311 0000
GPN 361 KS 0411	24.2	10.2	7.7	20.7	361 0411 0000
GPN 361 KS 0511*	28.3	10.3	7.7	20.7	361 0511 0000
GPN 361 KS 0421	16.2	14.2	7.7	20.7	361 0421 0000
GPN 361 KS 0621	20.2	14.2	7.7	20.7	361 0621 0000
GPN 361 KS 0821	24.2	14.2	7.7	20.7	361 0821 0000
GPN 361 KS 1021	28.2	14.2	7.7	20.7	361 1021 0000
GPN 361 KS 0112	13.7	11.8	7.7	20.7	361 0112 0000
GPN 361 KS 0212	19.7	11.8	7.7	20.7	361 0212 0000
GPN 361 KS 0412	31.7	11.8	7.7	20.7	361 0412 0000
GPN 361 KS 0512	37.7	11.8	7.7	20.7	361 0512 0000

Size in mm

For information regarding materials, colours, drawings and the use of our items, please refer to pages 124/125.

* This size is not IPX4 certified.


Fits better.

Protection for FEP flat connector housings.


Saves time.

With practical tab for fast removal.


Seals better.

Protection against splashing water from any direction (IPX4) depending on the specific connector design and quality.**


Cleaner.

Upon request, we can manufacture in the specially designed cleanroom in accordance with VDA Volume 19 and ISO 16232. For further information, please refer to page 129.


Better.

Optimum clamping fit thanks to circumferential fins.

Application Guide

Suitable for contact connectors

FEP 1.5 Pole number							FEP 2.8 Pole number				Rows		
2	3	4	5	6	8	10	1	2	4	5	1	2	item
.											.		GPN 361 KS 0211
	.										.		GPN 361 KS 0311
		.									.		GPN 361 KS 0411
			.								.		GPN 361 KS 0511*
		.									.	.	GPN 361 KS 0421
				.							.		GPN 361 KS 0621
					.						.		GPN 361 KS 0821
						.					.	.	GPN 361 KS 1021
							.				.		GPN 361 KS 0112
								.			.		GPN 361 KS 0212
									.		.		GPN 361 KS 0412
										.	.		GPN 361 KS 0512

The contact protection GPN 361 was developed for the FEP flat connection housings listed in the application table. The contact protection is also suitable for other connections.

* This size is not IPX4 certified.

** Related to Pöppelmann sample connector, tested according to DIN 40050. Please refer to the note on page 125.

You might also be interested in the following products: GPN 360, GPN 365